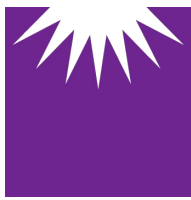




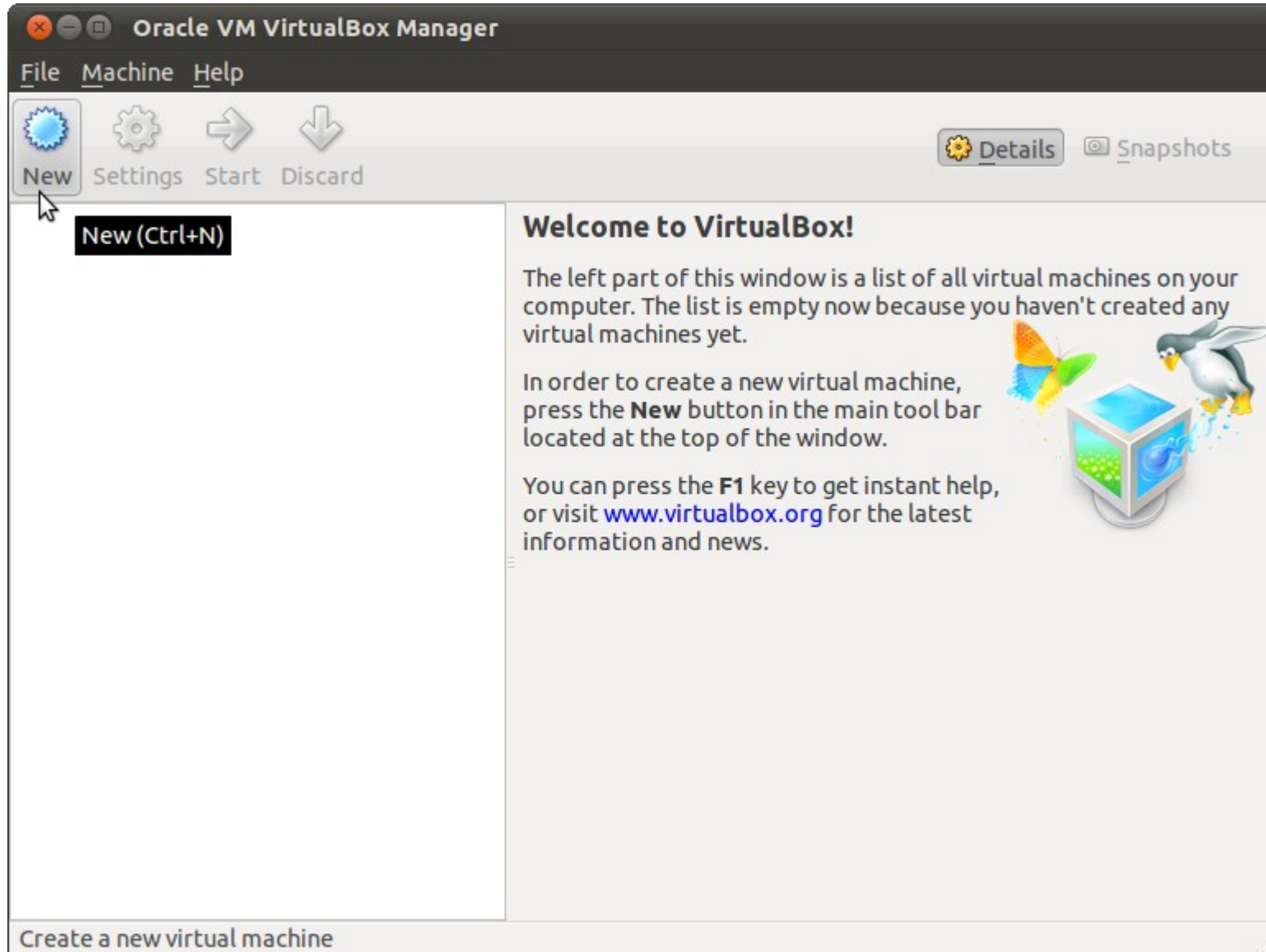
Booting up GParted ISO on VirtualBox

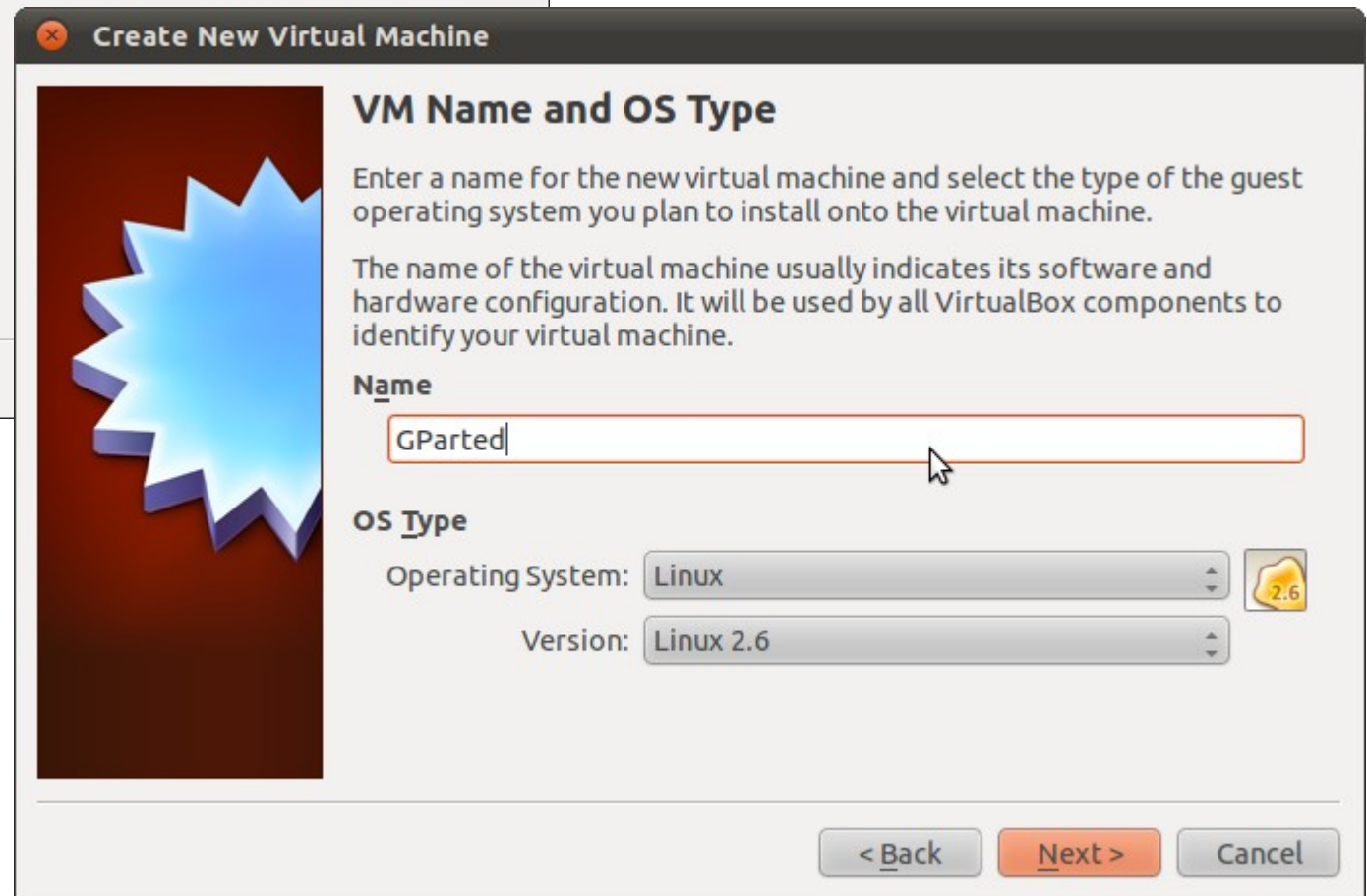
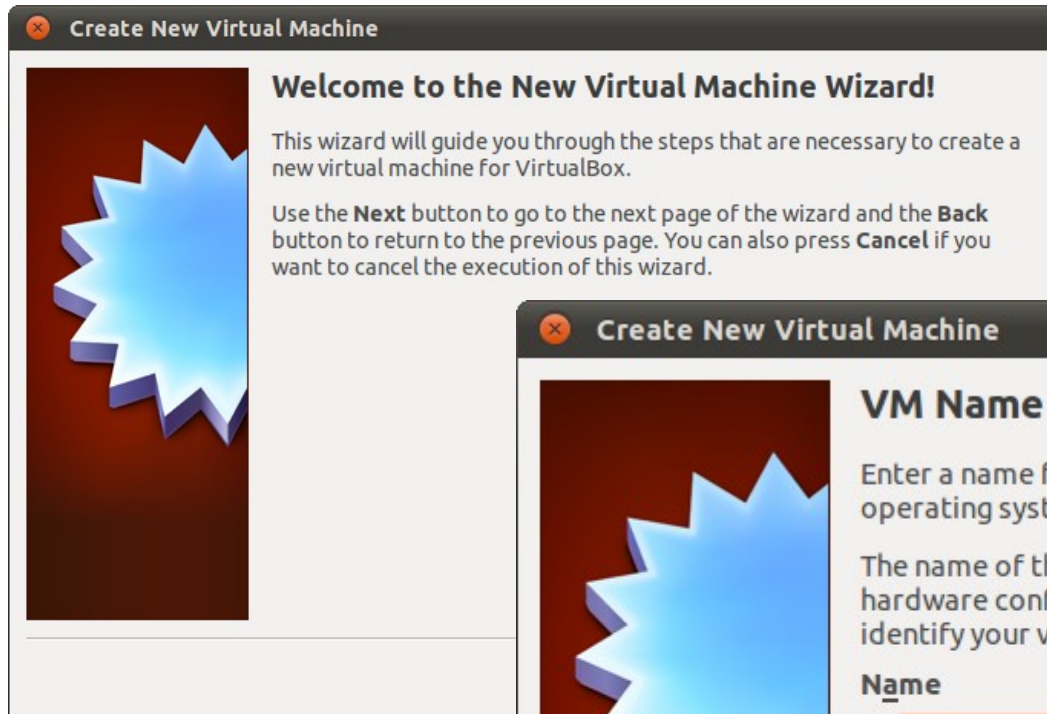
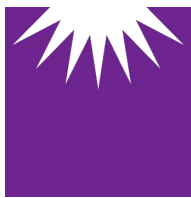


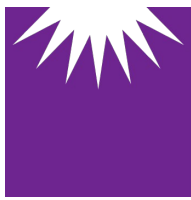


JESUÏTES El Clot

Escola del Clot







JESUÏTES El Clot

Escola del Clot

Create New Virtual Machine

Memory

Select the amount of base memory (RAM) in megabytes to be allocated to the virtual machine.
The recommended base memory size is **256 MB**.

Base Memory Size

4 MB 3072 MB

999 MB

< Back Next > Cancel

Create New Virtual Machine

Virtual Hard Disk

If you wish you can now add a start-up disk to the new machine. You can either create a new virtual disk or select one from the list or from another location using the folder icon.

If you need a more complex virtual disk setup you can skip this step and make the changes to the machine settings once the machine is created.
The recommended size of the start-up disk is **8.00 GB**.

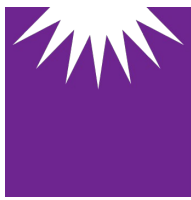
Start-up Disk

Create new hard disk

Use existing hard disk

Empty

< Back Next > Cancel



JESUÏTES El Clot

Escola del Clot

Create New Virtual Disk

Welcome to the virtual disk creation wizard

This wizard will help you to create a new virtual disk for your virtual machine.

Use the **Next** button to go to the next page of the wizard and the **Back** button to return to the previous page. You can also press **Cancel** if you want to cancel the execution of this wizard.

Please choose the type of file that you would like to use for the new virtual disk. If you do not need to use it with other virtualization software you can leave this setting unchanged.

File type

- VDI (VirtualBox Disk Image)
- VMDK (Virtual Machine Disk)
- VHD (Virtual Hard Disk)
- HDD (Parallels Hard Disk)

< Back **Next >** Cancel

Create New Virtual Disk

Virtual disk storage details

Please choose whether the new virtual disk file should be allocated as it is used or if it should be created fully allocated.

A **dynamically allocated** virtual disk file will only use space on your physical hard disk as it fills up, although it will not shrink again automatically when space on it is freed.

A **fixed size** virtual disk file may take longer to create on some systems but is often faster to use.

Storage details

- Dynamically allocated
- Fixed size

< Back **Next >** Cancel

Create New Virtual Disk

Virtual disk file location and size

Please type the name of the new virtual disk file into the box below or click on the folder icon to select a different folder to create the file in.

Location

GParted

Select the size of the virtual disk in megabytes. This size will be reported to the Guest OS as the maximum size of this virtual disk.

Size

4.00 MB 2.00 TB

20.00 GB

< Back **Next >** Cancel

Create New Virtual Disk

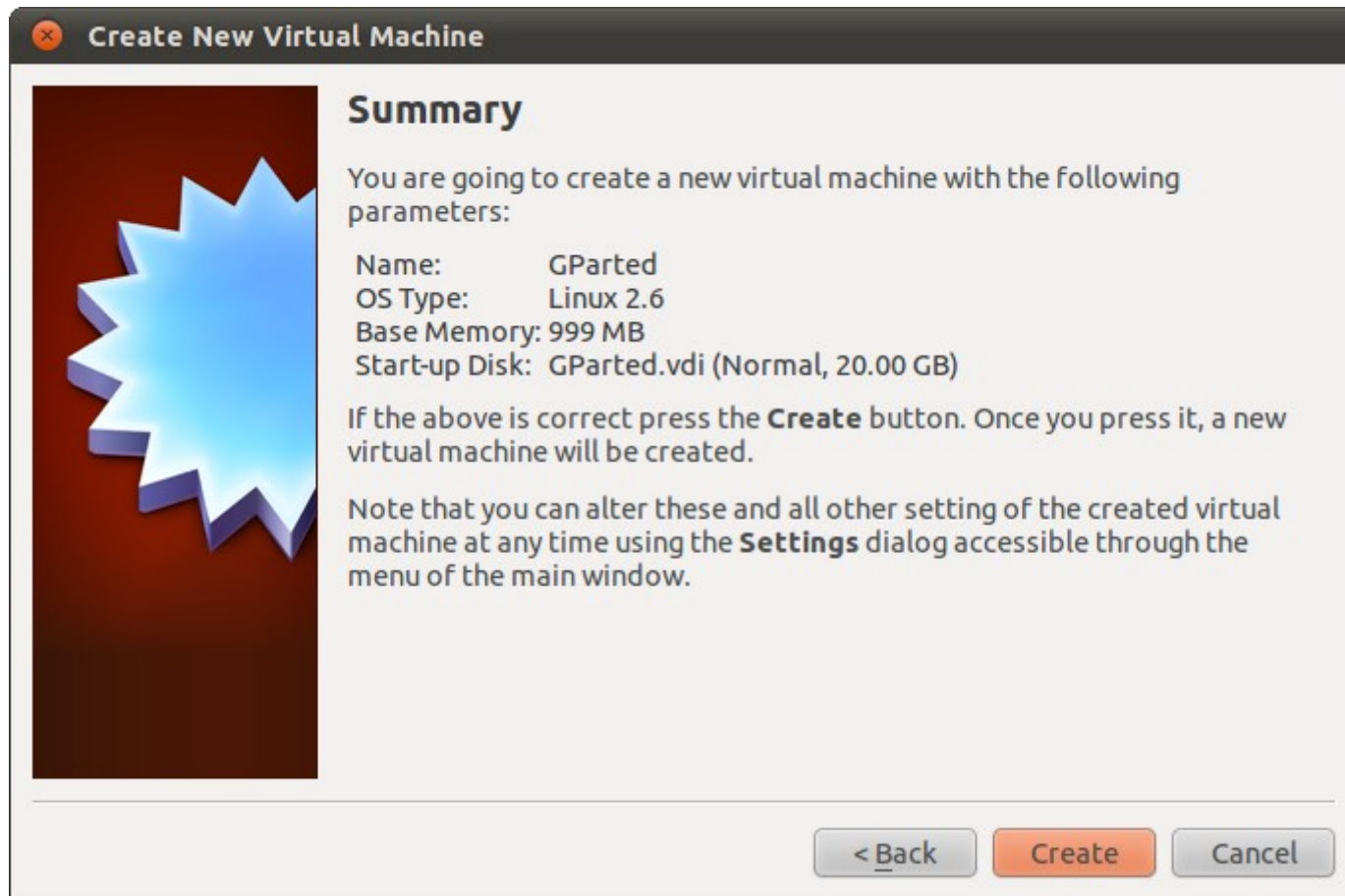
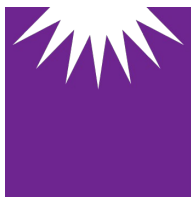
Summary

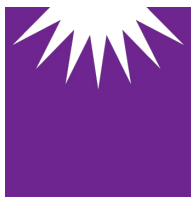
You are going to create a new virtual disk with the following parameters:

File type: VDI (VirtualBox Disk Image)
Details: Dynamically allocated storage
Location: /home/fje/VirtualBox VMs/GParted/GParted.vdi
Size: 20.00 GB (21474836480 B)

If the above settings are correct, press the **Create** button. Once you press it the new virtual disk file will be created.

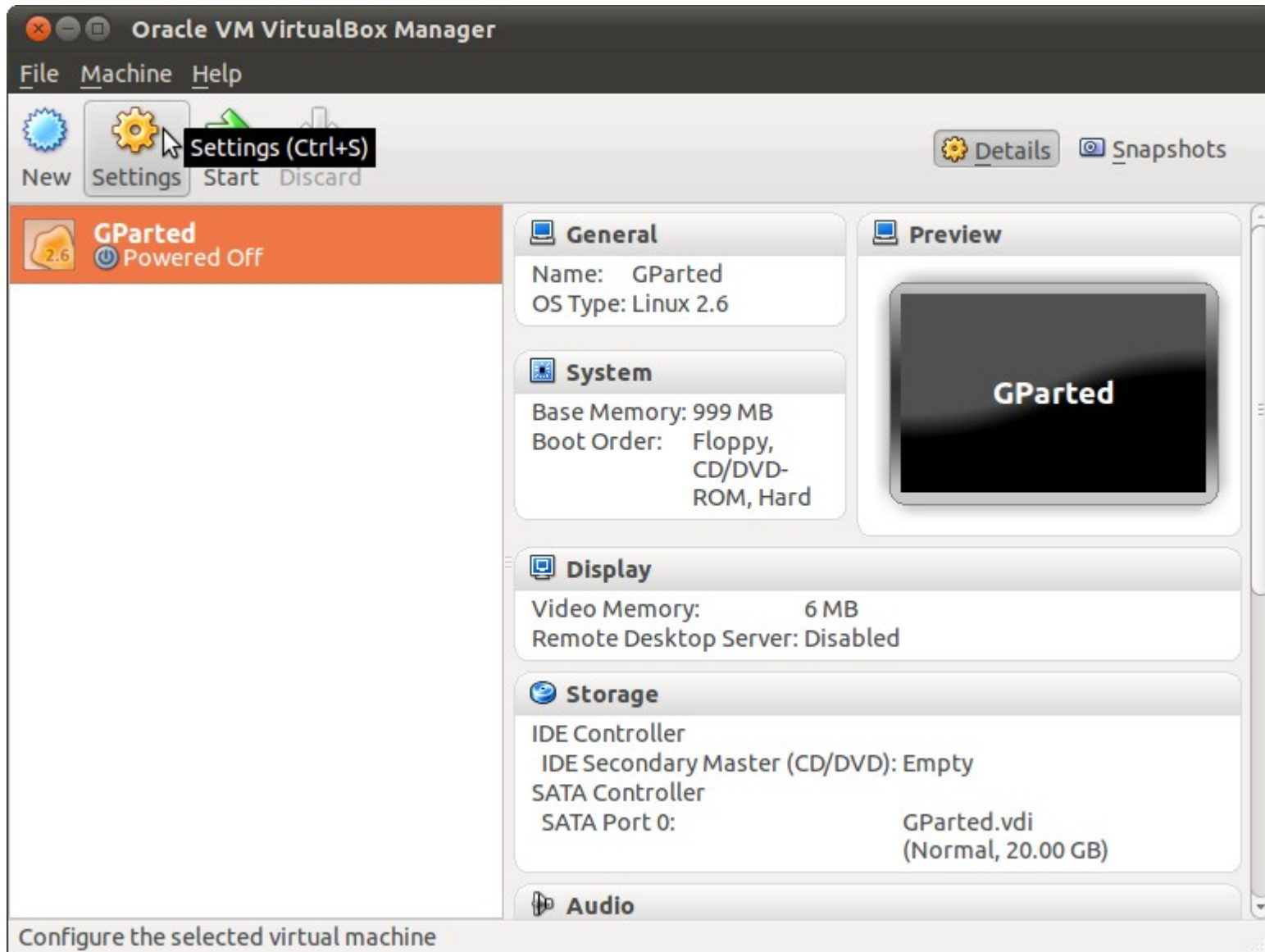
< Back **Create** Cancel

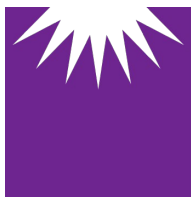




JESUÏTES El Clot

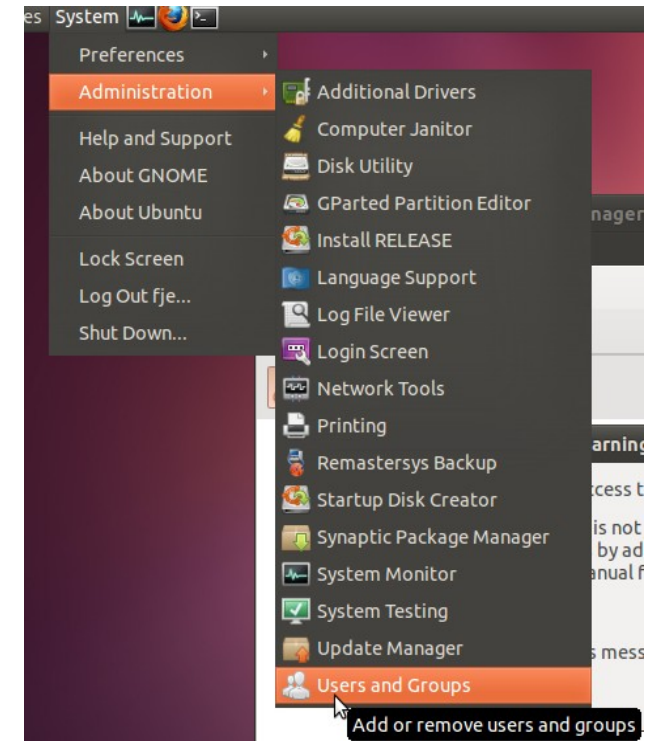
Escola del Clot

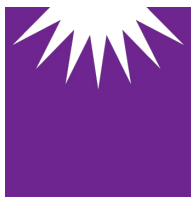




JESUÏTES El Clot

Escola del Clot





JESUÏTES El Clot

Escola del Clot

Users Settings

fje
fje

Change...

Account type: **Custom** Change...

Password: **Asked on login** Change...

Add Delete

Manage Groups

Advanced Settings

Help Close

Groups settings

Groups available on the system:

- tape
- tty
- users
- utempter
- utmp
- uucp
- vboxusers**
- video
- voice
- www-data

Add Properties Delete

Help Close

Group 'vboxusers' Properties

Basic Settings

Group name:

Group ID:

Group Members

- fje

Cancel OK

Authenticate

You need to authenticate to modify the system configuration

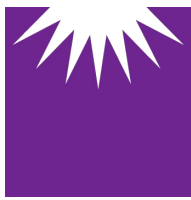
An application is attempting to perform an action that requires privileges. Authentication is required to perform this action.

Password:

▶ **Details**

Cancel Authenticate

Cancel OK



JESUÏTES El Clot

Escola del Clot

GParted - Settings

General

System

Display

Storage

Audio

Network

Serial Ports

USB

Shared Folders

System

Motherboard Processor Acceleration

Base Memory: 999 MB

4 MB 3072 MB

Boot Order:

- CD/DVD-ROM
- Hard Disk
- Floppy
- Network

Chipset: PIIX3

Extended Features:

- Enable IO APIC
- Enable EFI (special OSes only)
- Hardware clock in UTC time
- Enable absolute pointing device

Select a settings category from the list on the left-hand side and move the mouse over a settings item to get more information.

Help Cancel OK

GParted - Settings

General

System

Display

Storage

Audio

Network

Serial Ports

USB

Shared Folders

Storage

Storage Tree

- IDE Controller
 - Empty
 - GParted.vdi
- SATA Controller

Attributes

CD/DVD Drive: IDE Secundar

Live CD/DVD

Information

Type: -

Size: -

Location: -

Attached To: -

Choose a virtual CD/DVD disk or a physical drive. The virtual machine will see a disk inserted into the drive. The virtual machine will see a disk inserted into the file or on the disk in the physical drive.

Help

Attributes

CD/DVD Drive: IDE Secundar

Live CD/DVD

Information

Type: -

Choose a virtual CD/DVD disk file...

Host Drive MATSHITA DVD-RAM UJ880AS (sr0)

Remove disk from virtual drive

Choose a virtual CD/DVD disk file

Location: gparted-live-0.9.1-1.iso

Places	Name	Size	Modified
Search	gparted-live-0.9.1-1.iso	97.0 MB	11:36
Recently Used	ubuntu-11.04-desktop-i386.iso	685.3 MB	09/18/2011
fje	ubuntu-11.04-desktop-i386-CatalanRemix.iso	647.0 MB	08/31/2011

Add Remove

All CD/DVD-ROM disk images

Cancel Open

GParted - Settings

General

System

Display

Storage

Audio

Network

Serial Ports

USB

Shared Folders

Storage

Storage Tree

- IDE Controller
 - gparted-live-0.9.1-1.is...
- SATA Controller
 - GParted.vdi

Attributes

CD/DVD Drive: IDE Secundar

Live CD/DVD

Information

Type: Image

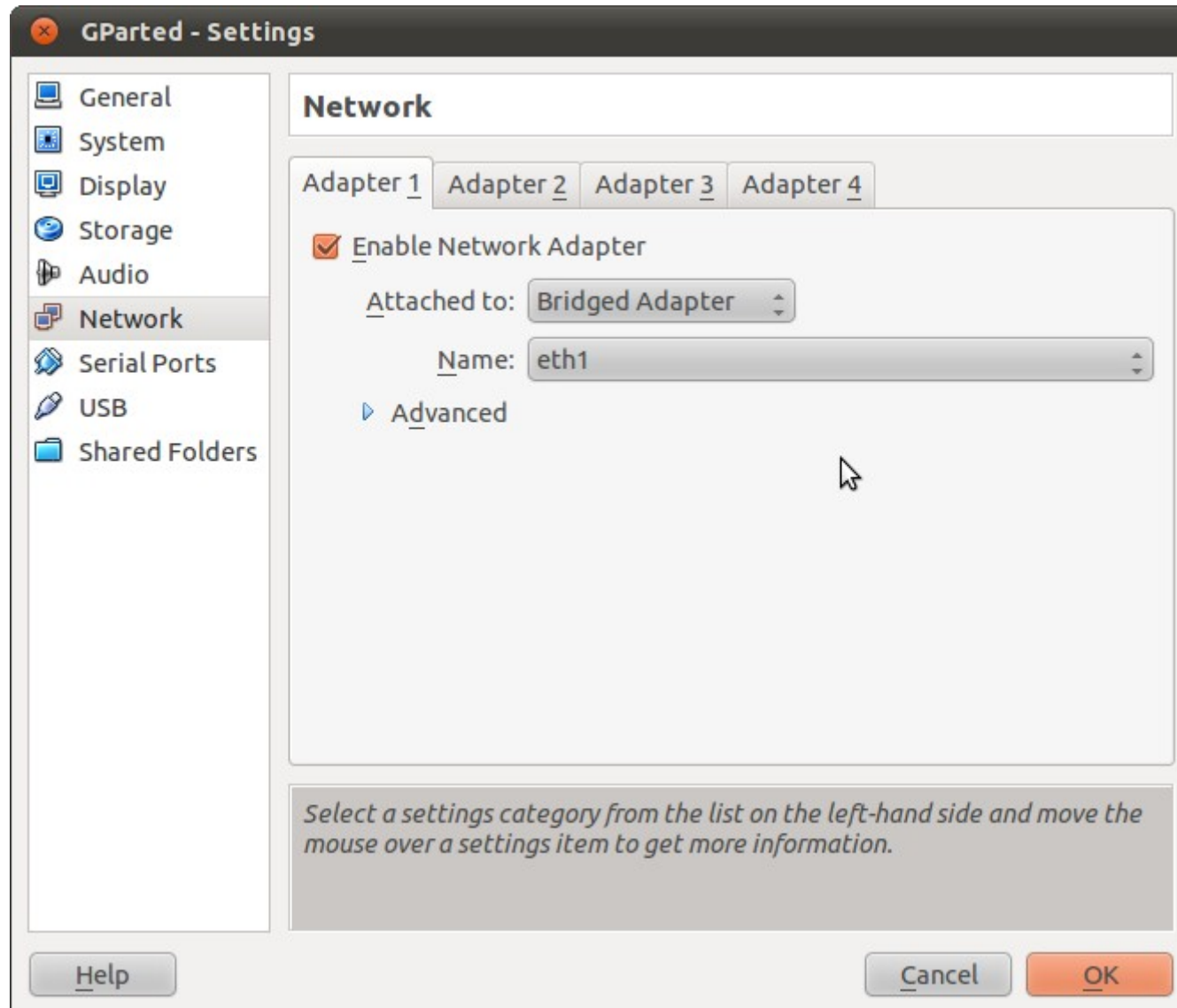
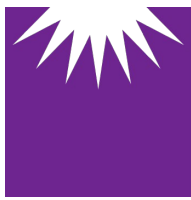
Size: 96.95 MB

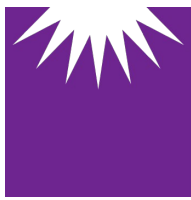
Location: /home/fje/Docum...

Attached To: -

Select a settings category from the list on the left-hand side and move the mouse over a settings item to get more information.

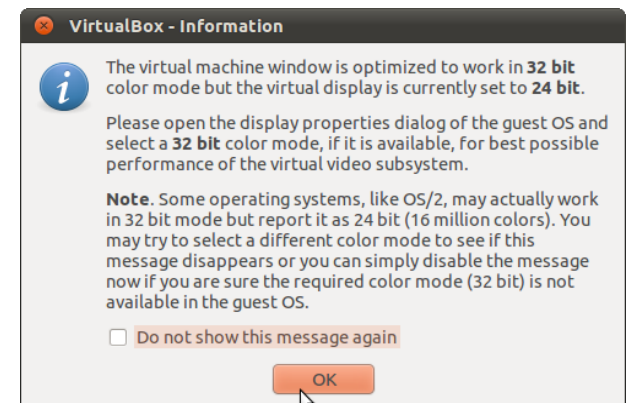
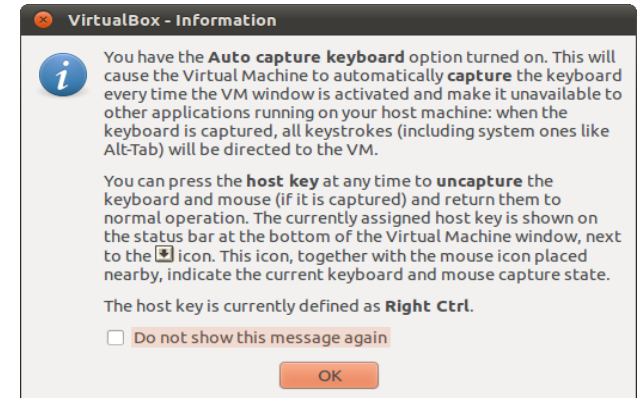
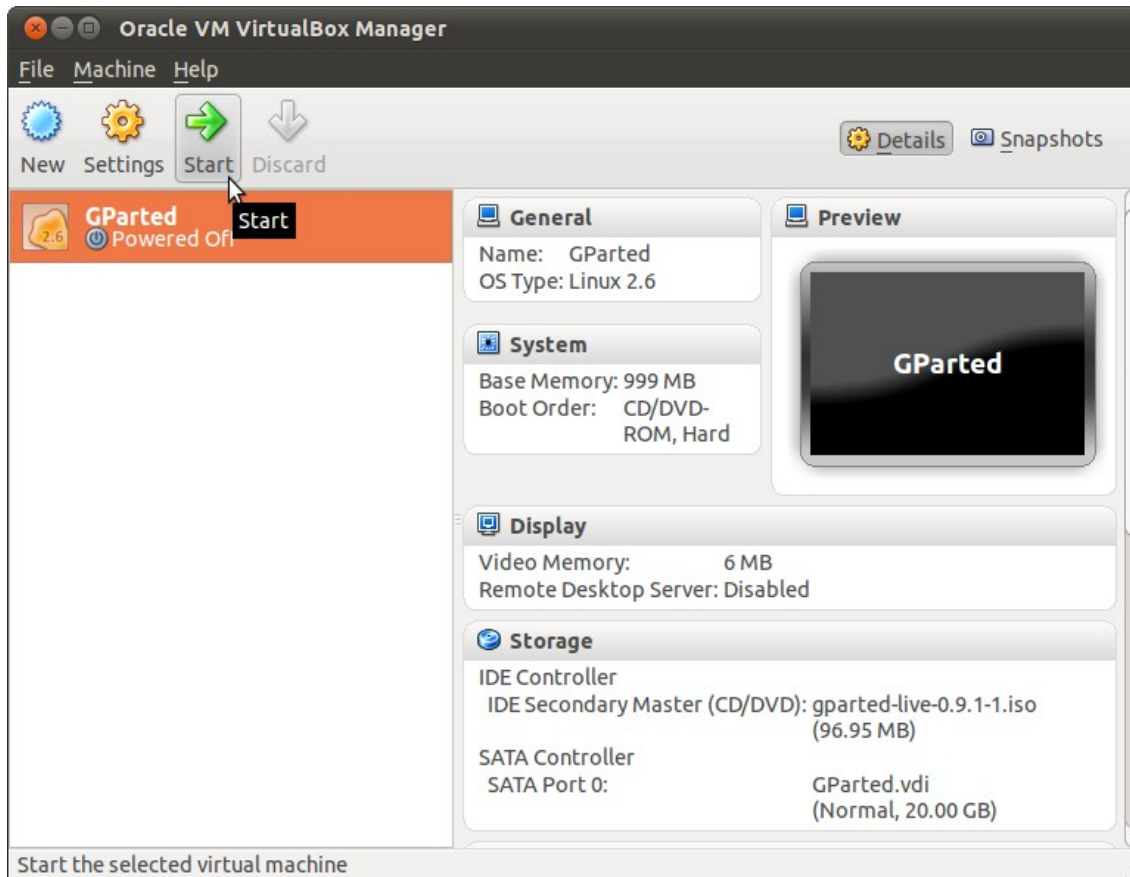
Help Cancel OK

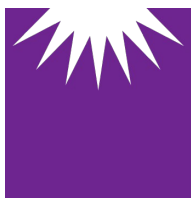




JESUÏTES El Clot

Escola del Clot

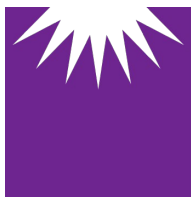




JESUÏTES El Clot

Escola del Clot





JESUÏTES El Clot

Escola del Clot

Package configuration

Configuring console-data

The keymap records the layout of symbols on the keyboard.

- 'Select keymap from arch list': select one of the predefined keymaps specific for your architecture (recommended for non-USB keyboards);
- 'Don't touch keymap': don't overwrite the keymap in /etc/console, which is maintained manually with install-keymap(8);
- 'Keep kernel keymap': prevent any keymap from being loaded next time the system boots;
- 'Select keymap from full list': list all the predefined keymaps. Recommended when using cross-architecture (often USB) keyboards.

Policy for handling keymaps:

Select keymap from arch list
Don't touch keymap
Keep kernel keymap
Select keymap from full list

<Ok> <Cancel>

Package configuration

Configuring console-data

In order to refine the keymap choice, please select the physical layout of the keyboard.

Keyboard layout:

- Romanian
- Russian
- Serbian
- Slovak
- Spanish
- Swedish
- Thai
- Turkish
- US american
- Ukrainian

<Ok> <Cancel>

Configuring console-data

The selected keyboard layout has several variants. Please select the one matching the keyboard.

Keyboard variant:

- Apple USB
- Standard

<Ok> <Cancel>

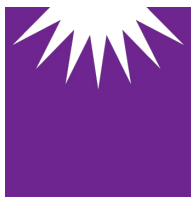
Configuring console-data

The selected keyboard allows a choice from a range of keymaps. Usually these were designed either for specific tastes (for instance with dead keys) or for specific needs (such as programming).

Keymap:

- CP850
- Standard

<Ok> <Cancel>



JESUÏTES El Clot

Escola del Clot

```
Looking for keymap to install:
```

```
es  
*****
```

```
Loading language settings:
```

```
01: Bresilian          18: Latvian  
02: British English    19: Macedonian  
03: Bulgarian          20: Norwegian  
04: Catalan            21: Nepali  
05: Czech              22: Portuguese  
06: Dutch              23: Punjabi  
07: Finnish            24: Russian  
08: French             25: Spanish  
09: Galician           26: Simplified Chinese  
10: German             27: Sloven  
11: Greek              28: Swedish  
12: Hebrew            29: Traditional Ch  
13: Hungarian          30: Traditional Ch  
14: Italian            31: Turkish  
15: Japan              32: Ukrainian  
16: Kinyarwanda        33: US English  
17: Lithuanian         34: Vietnamese
```

```
Which language do you prefer ?
```

```
[33] _
```

```
15: Japan              32: Ukrainian  
16: Kinyarwanda        33: US English  
17: Lithuanian         34: Vietnamese
```

```
Which language do you prefer ?
```

```
[33]
```

```
The default language US English is used
```

```
Language selected en_US
```

```
Setting locale in /etc/default/locale...
```

```
Setting locale in /etc/environment...
```

```
done!
```

```
*****
```

```
///NOTE/// Later we will enter graphical environment if you choose '0'. However,  
if graphical environment (X-window) fails to start, you can:
```

```
Run "sudo Forcevideo" to configure it again. Choose 1024x768, 800x600 or 640x480  
as your resolution and the driver for your VGA card, etc. Most of the time you  
can accept the default values if you have no idea about them.
```

```
If failing to enter graphical environment, and it does not return to text mode,  
you can reboot again, and choose '1' here to config X manually.
```

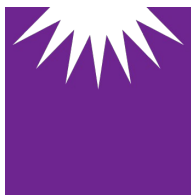
```
-----  
Which mode do you prefer ?
```

```
(0) Continue to start X to use GParted automatically
```

```
(1) Run 'Forcevideo' to config X manually
```

```
(2) Enter command line prompt
```

```
[0] _
```



JESUÏTES El Clot

Escola del Clot

The screenshot shows a Linux desktop environment with the GParted application running in a virtual machine. The GParted window displays a disk with 20.00 GiB of unallocated space. The desktop background is a purple-to-pink gradient. The system tray shows the date and time as 'Thu Oct 6, 12:54:08'.

The GParted window title is "/dev/sda - GParted". The menu bar includes "GParted", "Edit", "View", "Device", "Partition", and "Help". The toolbar contains icons for "New", "Delete", "Resize/Move", "Copy", "Paste", "Undo", and "Apply". The disk size is shown as "/dev/sda (20.00 GiB)".

Partition	File System	Size	Used	Unused	Flags
unallocated	unallocated	20.00 GiB	---	---	

0 operations pending

Workspace 1 | 06 Oct, Thu 10:54:06 | /dev/sda - GParted

Right Ctrl

[20111006] | [biblioteca.txt (279 G...)] | Documents | [System Monitor] | Oracle VM VirtualBox... | GParted [Running] - O...